



284 Pacific Highway Belmont North, NSW



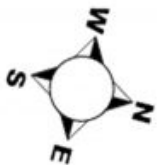
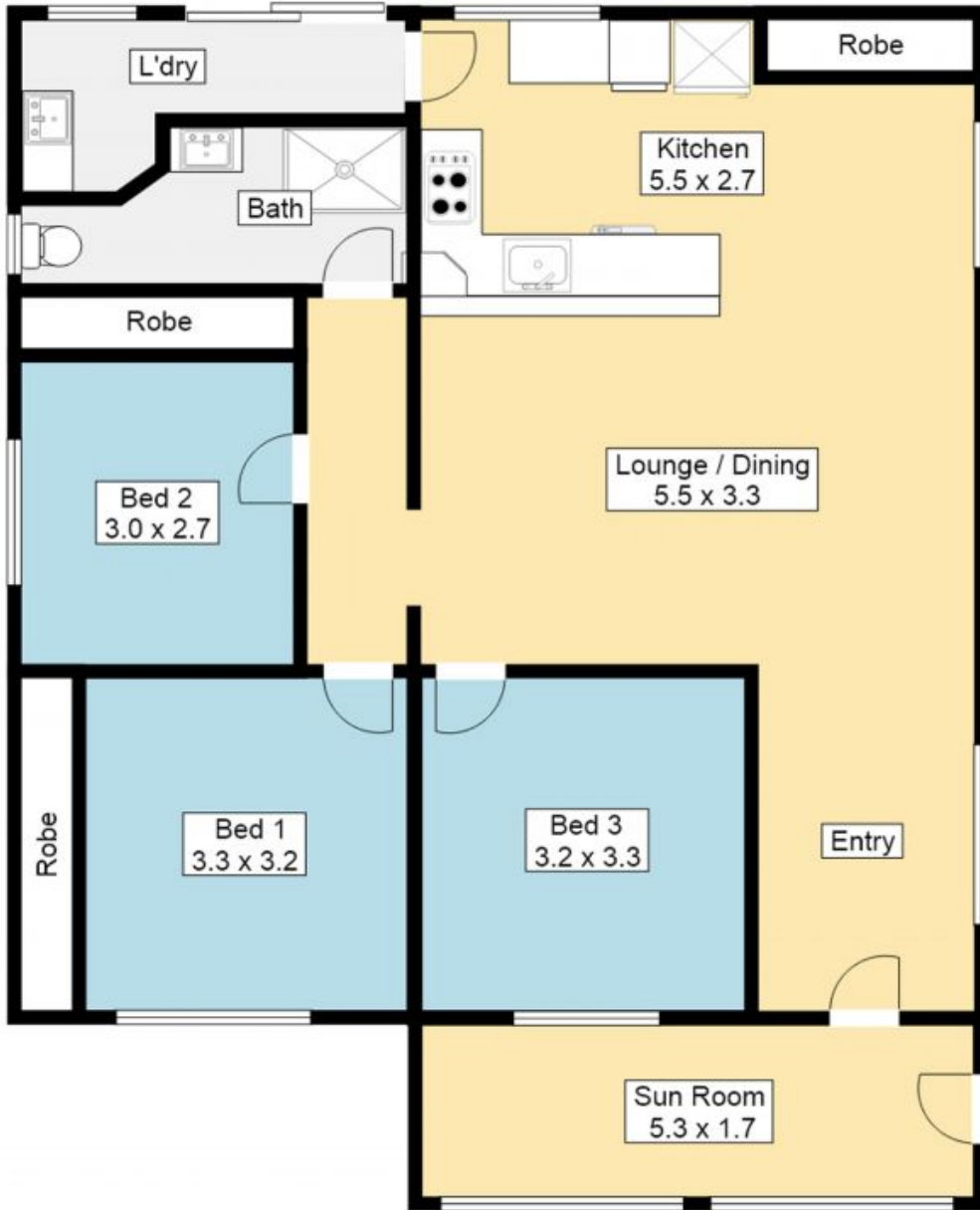
First home or investment special!

- Solid home situated on a good sized fenced block of approx. 582 sq.m
- Open plan lounge/dining with modern timber-look floors
- Updated kitchen with quality stainless steel appliances and track lighting
- Updated bathroom, separate internal laundry
- Carpeted bedrooms with built-in wardrobes and ceiling fans in two

Council Rates: \$450.00 p/q

Water Rates: \$728.00/year (approx)

**One Agency Eastlakes -
Swansea**



Floor Plan Disclaimer: Whilst care has been taken, all measurements are approximate and intended as a guide only. Any person using this information other than as a guide should always rely on their own enquiries.

284 Pacific Highway, Belmont North

ONEAGENCY
EASTLAKES