



## 62b Berringar Road Valentine NSW

4 3 2

\*\* Conditions of entry photo ID & a face mask is recommended \*\*

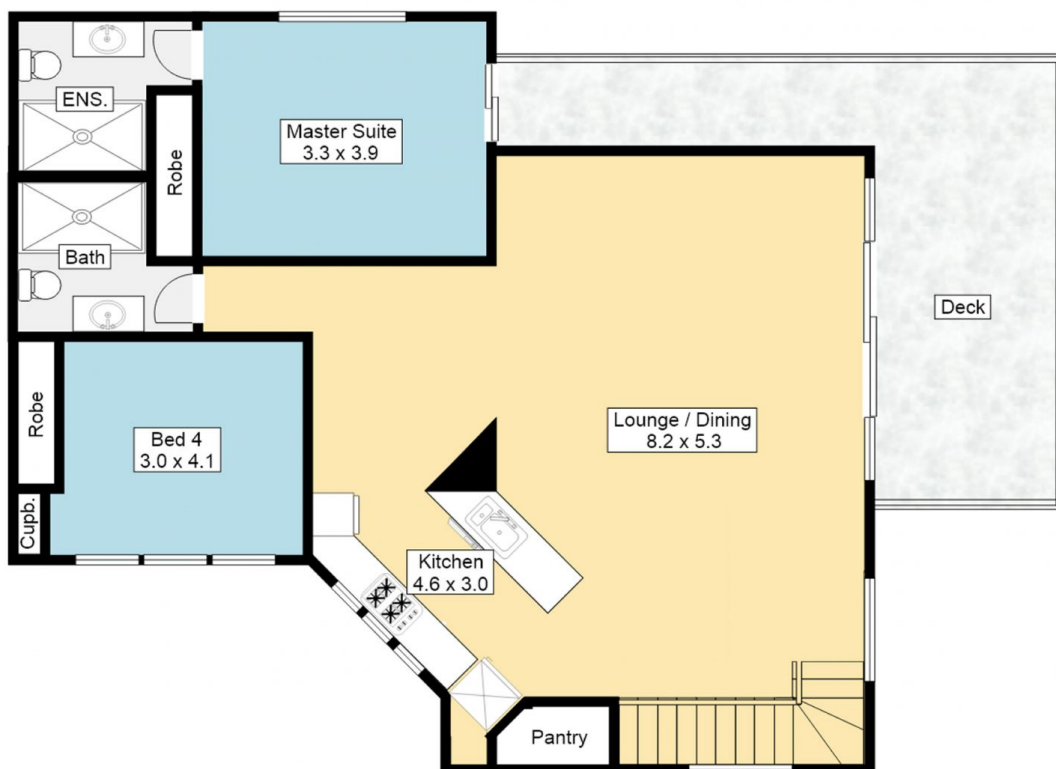
The developer has other projects on the go therefore all serious offers will be considered. If you love brand new but not the hassle of building, if you're keen to find a lower maintenance home but have been disappointed at how cramped most townhouses and apartments feel, if you want to live in a friendly village-type suburb close to the water, then this very spacious easy-care home in the heart of Old Valentine is for you.

Entering from the driveway past the oversized double garage, you'll find yourself in a light-filled entry foyer with views straight through to the lush green backyard. This lower level houses two bedrooms, a 2-way bathroom and a family room that flows out to the north-facing Merbau

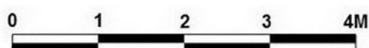
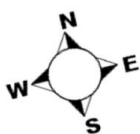
**Land Size** : 489 sqm  
**View** : <https://www.oneagencyeastlakes.com.au/7976379>



Ground Level



Upper Level



Floor Plan Disclaimers: Whilst care has been taken, all measurements are approximate and intended as a guide only. Any person using this information other than as a guide should always rely on their own enquiries.

62 Berringar Road, Valentine

**ONE**AGENCY  
EASTLAKES